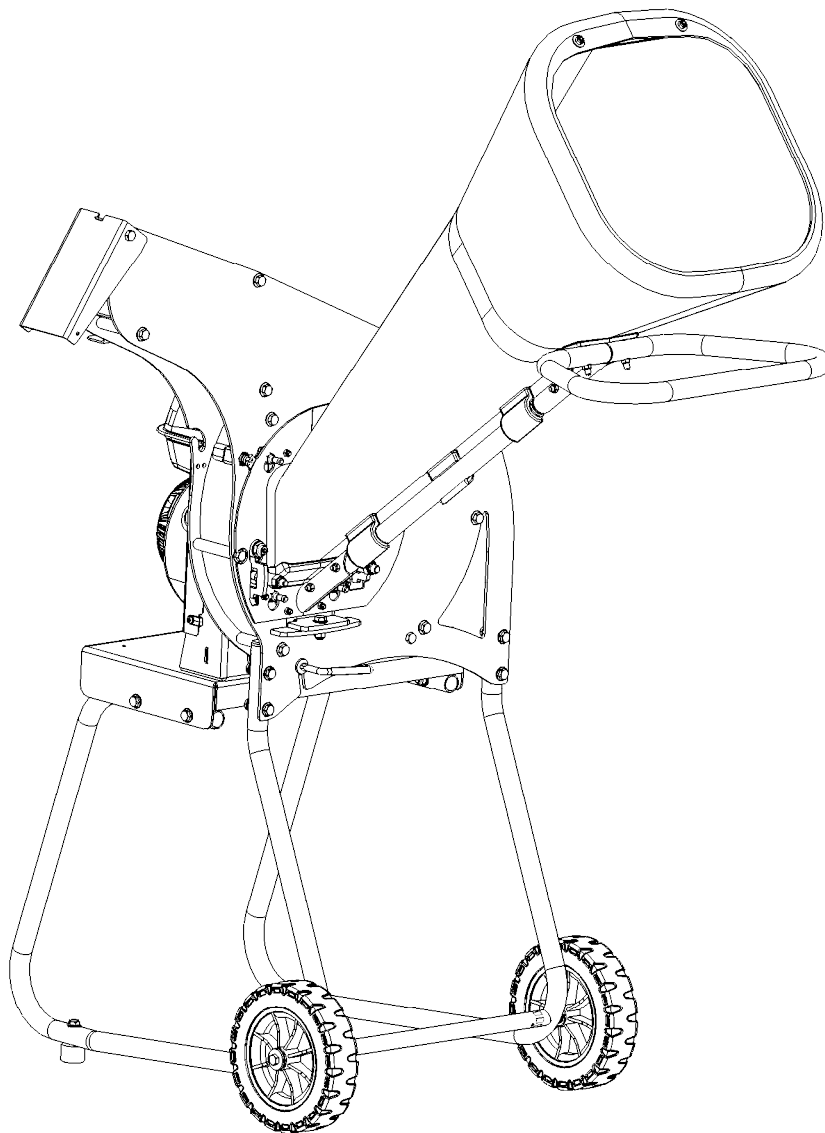
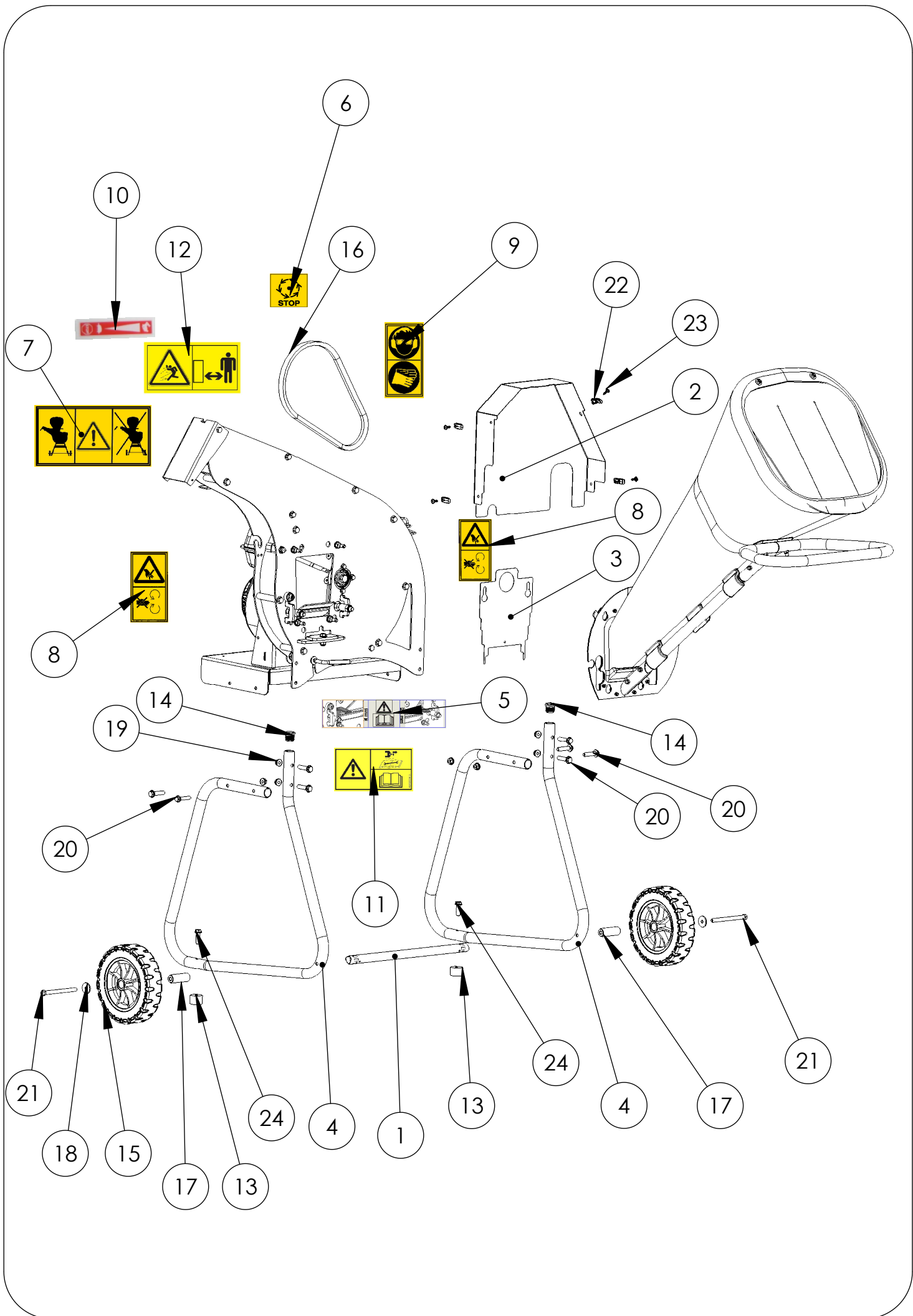


# Pièces de rechange Spare parts list

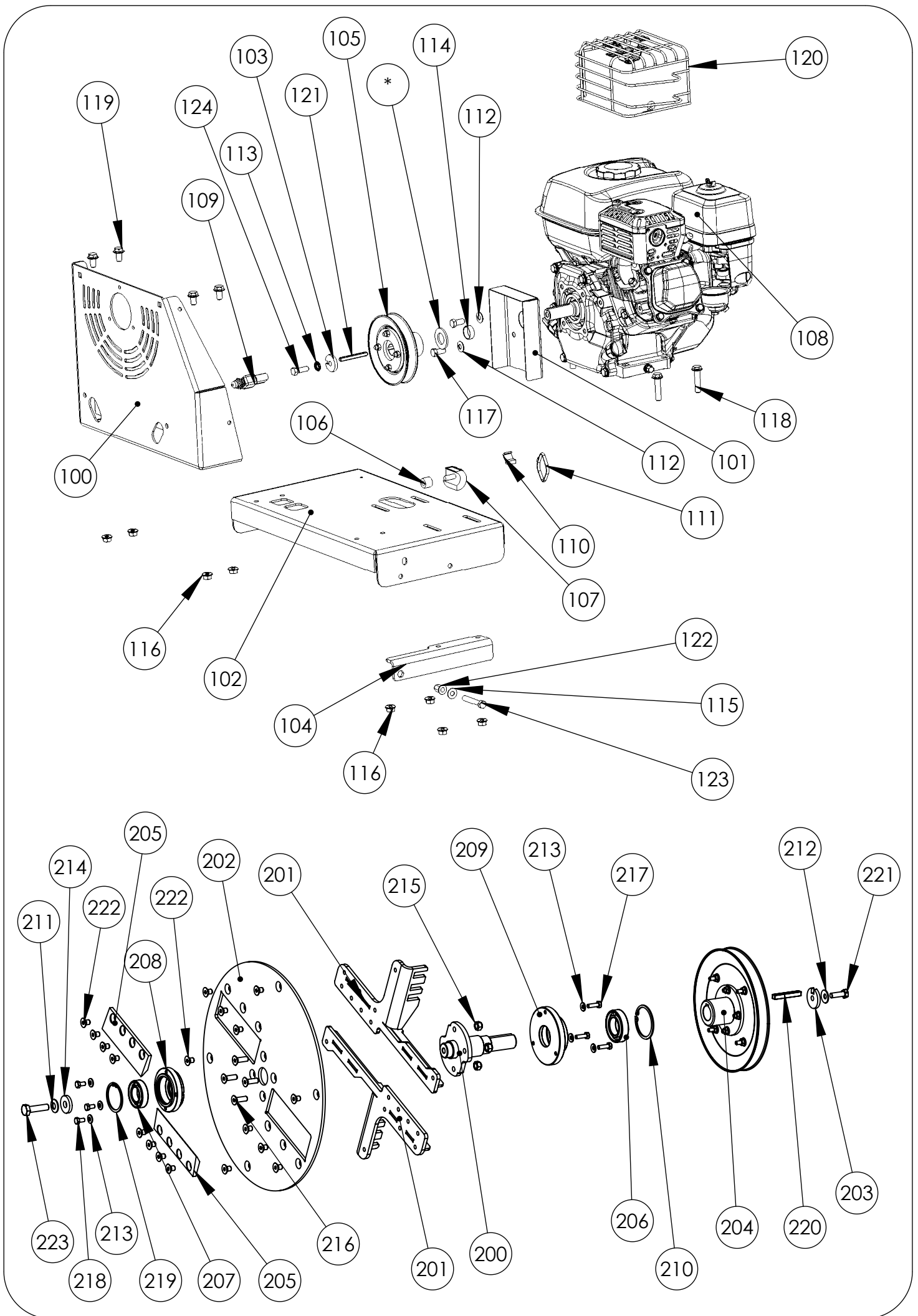
**KL00\*\*04\*\***



***BROYEUR DE VEGETAUX  
GARDEN SHREDDER***



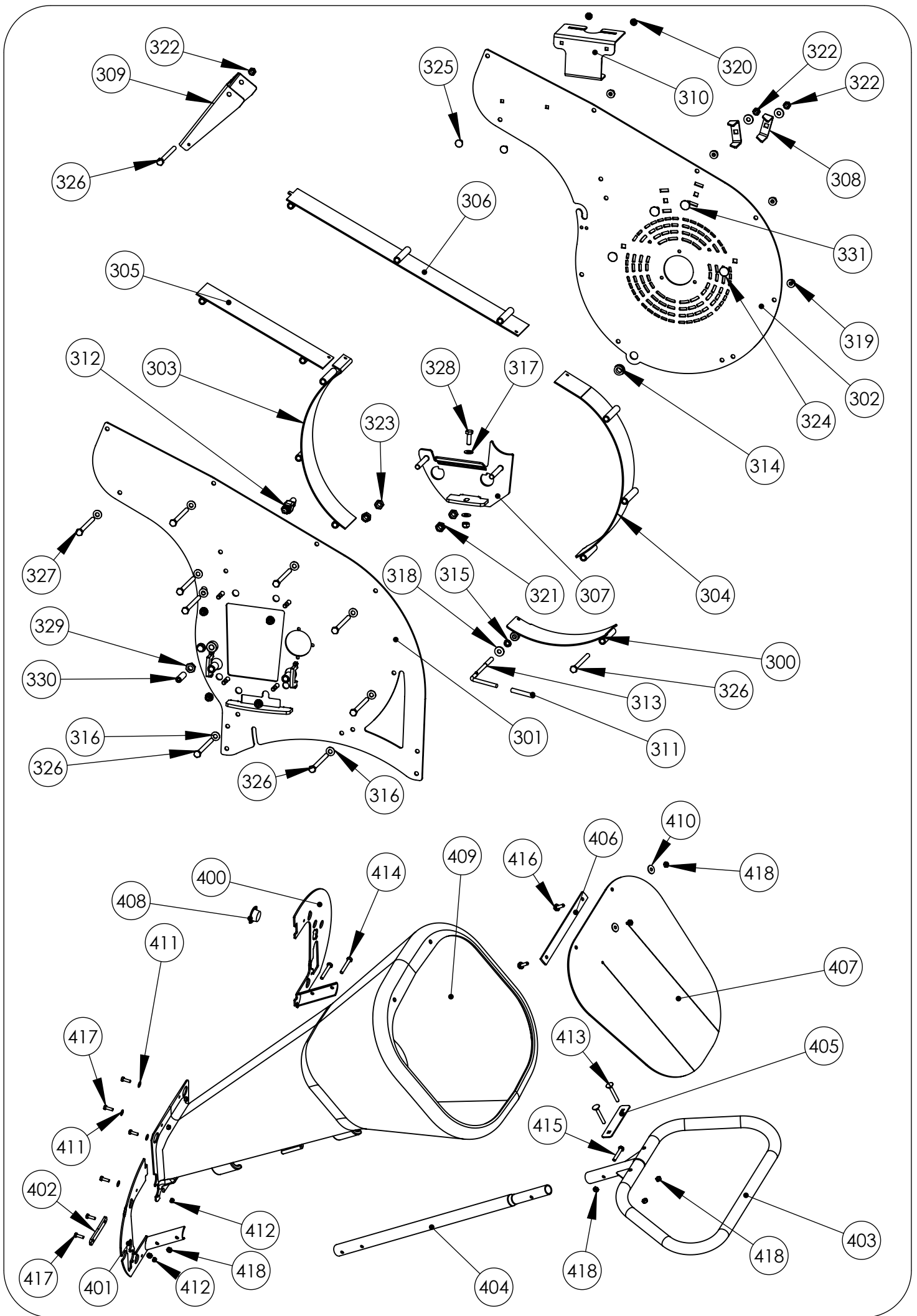
Rep N°	Ref.	Désignation	Description	Défaut/Qté
1	KM02011002	TUBE LIAISON GUIDON GRIS ALU	HANDLEBAR ALU GREY LINK TUBE	1
2	KL02041608	CAPOT COURROIE NOIR	BLACK BELT COVER	1
3	KL02041607	TRAPPE PROTECTION ENTREE NOIRE	BLACK PROTECTION HATCH	1
4	KL02041001	TUBE SUPPORT GRIS ALUMINIUM	ALUMINIUM GRAY FRAME PIPE	2
5	K503000078-	AUTO. REGL. CONTRE COUTEAU	STICKER SETTING CONTRA KNIVES	1
6	K503000066-	AUTOCOLLANT ATTENDRE L'ARRET DES COMPOSANTS DU BROYEUR	STICKER "WAIT THE STOP OF ROTATING TOOL "	1
7	K503000061-	AUTOCOLLANT NE PAS DEMONTER LE VOLET	STICKER " DON'T DISASSEMBLE HATCH"	1
8	K503000060-	AUTOCOLLANT DANGER LAME EN ROTATION	STICKER "CAUTION ROTATING BLADE "	2
9	K503000059-	AUTOCOLLANT LUNETTE DE PROTECTION CASQUE + GANTS	STICKER " PROTECTIVE EYE WEAR+HELMETT +GLOVES"	1
10	K503000031-	AUTOCOLLANT ACCELERATEUR STOP SANS STARTER	STICKER "ENGINE SPEED VARIATION" WITHOUT STARTER	1
11	K503000015-	AUTOCOLLANT LIRE LA NOTICE	STICKER " READ THE MANUAL BEFORE USE"	1
12	K503000003-	AUTOCOLLANT DISTANCE DE SECURITE	STICKER "SECURITY DISTANCE"	1
13	K342000017	PIED SILENTBLOC Ø30 H22	ANTIVIBRATION BASE Ø 30 H22	2
14	K341000021	BOUCHON TUBE DIAM 25	PLASTIC CAP	2
15	K309000036	ROUE NOIR Ø 200 ALES 20	BLACK WHEEL Ø 200	2
15	K309000039	ROUE GONFLABLE Ø210	INFLATABLE WHELL Ø 210 HUB 12.5 x 63	2
16	K306030049	COURROIE B32.5	BELT B32.5	1
17	K302020127	ENTRETOISE ROUE GONFLABLE	INFLATABLE WHEEL SPACER	2
17	K302020122	ENTRETOISE 8.2 x20 x 59	SPACER 8.2 x 20 x 59	2
18	K300400803	RONDELLE PLATE 28 x 8 x 3 ZN	PLATE WASHER 28 X 8 X 3	2
19	K300260802	ECROU H M8 EMB CR ZN NOIR	NUT H M8 NOTCHED SHOULDER BLACK	8
20	K300010842	VIS H EMB CR 8 x 40 ZN NOIR	SCREW H NOTCHED SHOULDER 8 X 40 BLACK	8
21	0300010805	VIS H 8 X 120/22 Z	SCREW H M8X120/220 Z	2
21	K300010833	VIS TH 8 x 110 ZN	SCREW TH 8 x 110 ZN	2
22	0340000002	ATTACHE IMP D6 EP2.5 L15	Captive fastener for screw 4.2	4
23	0300080405	VIS TOLE TETE POELIER D11	SCREW POZI 4.2X16Z	4
24	0300010854	VIS H 8x30 Z EMB CR DIN 6921	SCREW H 8x30 Z DIN 6921	2



Rep N°	Ref.	Désignation	Description	R-210 Qté	GP160 Qté	EP17 Qté
100	KL02041603	EQUERRE SUPPORT CARTER NOIR	BLACK BRACKET	1	1	1
101	KL02041602	CARTER CAPOT COURROIE NOIR	BLACK COVER	1	1	1
102	KL02041601	SUPPORT MOTEUR NOIR	BLACK ENGINE SUPPORT	1	1	1
103	KL02040205	RONDELLE POULIE MOTEUR	ENGINE PULLEY WASHER	1	1	1
104	KL02040201	TENDEUR DE COURROIE	BELT TENSIONER	1	1	1
105	KL01040001	POULIE MOTEUR Ø 110	MOTOR PULLEY Ø 110	1	1	1
106	K341000026	ENTRETOISE 8,2 X 16 X14	SPACER 8,2 x 16 X 14h	1	1	1
107	K330010203	SWITCH MOTEUR HONDA	SWITCH HONDA ENGINE	-	1	-
107	K330080202	SWITCH ON/OFF	SWITCH ON/OFF	1	-	-
108	K330030105	MOTEUR SUBARU EP 17 *	SUBARU EP 17 ENGINE*	-	-	1
108	0330011041	HONDA GP 160 H QMPB 5S		-	1	-
108	0330091003	MOTEUR R210	R210 ENGINE	1	-	-
109	K308060012	FAISCEAU COUPE CIRCUIT	ELECTRIC BRAKER	1	1	1
110	K308060009	FICHE ELECTRIQUE 564	CONNECTOR	1	1	1
111	K301060002	COLLIER PLASTIQUE NOIR	TIE-CABLE	4	4	4
112	K300430803	RONDELLE CONTACT M8 ZN NOIR	WASHER M8 BLACK	2	2	2
113	K300410801	RONDELLE NORD LOCK LARGE Ø 8	WASHER NORD LOCK Ø 8	1	1	1
114	K300402001	RONDELLE PLATE 20 X 36 X 3	PLATE WASHER 20 X 36 X 3	1	-	-
114	0302020220	ENTRETOISE MOTEUR	ENGINE SPACER	1	1	1
115	K300400802	RONDELLE PLATE 18 x 8 x 1.5	WASHER 18 X 8 X 1.5	1	1	1
116	K300260802	ECROU H M8 EMB CR ZN NOIR	NUT H M8 NOTCHED SHOULDER BLACK	8	8	8
117	K300010814	VIS H M8 x 16	SCREW H M8 X 16	2	-	-
117	K300060503	VIS TH 5/16 UNF 3/4	SCREW TH 5/16 UNF 3/4	-	2	2
118	K300010842	VIS H EMB CR 8 x 40 ZN NOIR	SCREW H NOTCHED SHOULDER 8 X 40 BLACK	4	4	4
119	K300010841	VIS H 8 x 16 EMB CR ZN NOIR	SCREW H NOTCHED SHOULDER 8 X 16 BLACK	4	4	4
120	0330012009	GRILLE ECHAP GP160	EXHAUST GRILL GP160	-	1	-
120	K330030201	GRILLE ECHAPPEMENT EP	EXHAUST GRILL EP	-	-	1
121	0301040035	CLAVETTE 4.76h9 x 4.76h9 x 54	COTTER 4.76 x 4.76 x 54	1	1	1
122	0300600802	INSERT A SERTIR HEX M8 OUVERT	Insert M8	1	1	1
123	0300090808	VIS TH 8 x 55 ISO 4017 ENDUITE	SLOWED SCREW 8 x 55	1	1	1
124	0300060501	VIS 5/16 TH 24 UNF LONG 25 Z	SCREW 5/16 TH24 LG 25MM Z	1	1	1

\* Le service après vente: s'adresser au réseau motoriste concerné  
For the engine's spare parts, please contact the motor's retailers network

Rep N°	Ref.	Désignation	Description	Qté
200	KL03040006	ARBRE ROTOR SOUDE	ROTOR SHAFT	1
201	KL03040005	SUPPORT COUTEAU	KNIFE SUPPORT	2
202	KL03040004	DISQUE ROTOR	ROTOR DISC	1
203	KL02040210	RONDELLE POULIE ROTOR	ROTOR PULLEY WASHER	1
204	KL01040005	POULIE ROTOR Ø 199	ROTOR PULLEY Ø 199	1
205	K320020032	COUTEAUX BROYEUR 6CV V2	KNIVES SHREDDER	2
206	K306010024	ROULEMENT 6006 2 RS 30 x 55 x 13	BEARING 6006 2RS 30 x 55 x 13	1
207	K306010016	ROULEMENT 6005 2 RS 25 x 47 x 12	BEARING 6005 2 RS	1
208	K302030110	PALIER RLT 25 X 47 X 12	BEARING HUB	1
209	K302030109	PALIER RLT 30 X 55 X 13	BEARING HUB	1
210	K301070014	CIRCLIPS INTERIEUR DE 55 DIN	CIRCLIPS INT 55 DIN	1
211	K300431001	RONDELLE CONTACT M 10	WASHER M10	1
212	K300430802	RONDELLE CONTACT LARGE M8	LARGE WASHER M8	1
213	K300430601	RONDELLE CONTACT M6	WASHER M6	6
214	K300401103	RONDELLE PLATE 30 x 11 x 5 ZN	WASHER 30 X 11 X 5 ZN	1
215	K300210801	ECROU FREIN H M8	NUT,NYLOC M8	4
216	K300030801	VIS TF HC M8 x 25 10.9	SCREW TF HC M8 x 25 10.9	4
217	K300010613	VIS TH 6 x 20 ZN	SCREW TH 6 x 20	3
218	K300010612	VIS H M6 x 12	SCREW H 6 X 12	3
219	0301070006	CIRCLIP INTERIEUR 47 DIN472-47	INTERNAL RETAINING RING	1
220	0301040036	CLAVETTE 8h9 X 7h11 X 52	COTTER 8 X 7 X 52	1
221	0300090801	VIS A GAUCHE 8X25 Z	Screw H M8x25 z LH	1
222	0300030804	VIS TF HC M8 x 12 ZN 10.9	SCREW TF HC M8 x 12 10.9	18
223	0300011038	VIS TH 10 X 40 10.9 ZN DIN 933	SCREW H 10 X 40 10.9	1



Rep N°	Ref.	Désignation	Description	Qté
300	KL02041606	TRAPPE DE DEBOURRAGE NOIRE	BLACK RAL9005 HATCH	1
301	KL02040906	CARTER AVANT JAUNE	YELLOW FRONT HOUSING	1
301	KL02041605	CARTER AVANT NOIR	BLACK FRONT HOUSING	1
302	KL02041604	CARTER ARRIERE NOIR	BLACK REAR HOUSING	1
302	KL02040905	CARTER ARRIERE JAUNE	YELLOW REAR HOUSING	1
303	KL02040604	1er CARTER ROUGE RAL3002	RED RAL3002 1ST PART	1
303	KL02042104	1er PARTIE CARTER VERTE	GREEN 1ST PART OF HOUSING SIDE	1
303	KL02042604	1er PARTIE CARTER ORANGE	ORANGE 1 PART OF HOUSING SIDE	1
303	KL02043604	1er PARTIE CARTER BLEUE	BLUE 1ST PART OF HOUSING SIDE	1
303	KL02041614	1er PARTIE CARTER NOIRE	BLACK 1ST PART	1
304	KL02040603	2 e FLANC CARTER ROUGE RAL3002	RED RAL3002 2ND PART	1
304	KL02042103	2 e PARTIE FLANC CARTER VERTE	GREEN 2ND PART OF HOUSING SIDE	1
304	KL02042603	2 e PARTIE FLANC CARTER ORANGE	ORANGE 2 PART OF HOUSING SIDE	1
304	KL02043603	2 e PARTIE FLANC CARTER BLEUE	BLUE 2ND PART OF HOUSING SIDE	1
304	KL02041613	2 e FLANC CARTER NOIRE	BLACK 2ND PART	1
305	KL02040602	PART INF EJECT ROUGE RAL3002	RED RAL3002 LOWER PART	1
305	KL02042102	PART INF EJECT VERTE	GREEN LOWER PART	1
305	KL02042602	PART INF EJECT ORANGE	ORANGE LOWER PART	1
305	KL02043602	PART INF EJECT BLEUE	BLUE LOWER PART	1
305	KL02041612	PART INF EJECT NOIRE	BLACK LOWER PART	1
306	KL02040601	PARTIE SUP EJEC ROUGE RAL3002	RED RAL 3002 HIGHER PART	1
306	KL02042101	PARTIE SUP EJEC VERTE	GREEN HIGHER PART	1
306	KL02042601	PARTIE SUP EJEC ORANGE	ORANGE HIGHER PART	1
306	KL02043601	PARTIE SUP EJEC BLEUE	BLUE HIGHER PART	1
306	KL02041611	PARTIE SUP EJEC NOIRE	BLACK HIGHER PART	1
307	KL02040207	CONTRE COUTEAUX	CONTRA-ROTATIONG KNIVES	1
308	KL02040206	LAME ARRIERE PLIE ZN	REAR BLADE	2
309	KL02011613	VOLET GOULOTTE EJECTION NOIR	BLACK SHUTTER	1
310	KL02011611	ACCROCHE GOULOTTE NOIR	BLACK GRIP	1
311	K341000028	EMBOUIT PLASTIQUE 6,5 x 60	END PIECE 6.5 x 60	1
312	K308060012	FAISCEAU COUPE CIRCUIT	ELECTRIC BRAKER	1
313	K305000060	LEVIER VERROU TRAPPE	SHUTTER LOCK LEVER	1
314	K301000005	PASSE FIL	WIRE PROTECT	1
315	K300460801	RONDELLE STARLOCK DIAM 8	WASHER STARLOCK DIAM 8	1
316	K300430803	RONDELLE CONTACT M8 ZN NOIR	WASHER M8 BLACK	10
317	K300400802	RONDELLE PLATE 18 x 8 x 1.5	WASHER 18 X 8 X 1.5	2
318	K300400801	RONDELLE PLATE ZN 8 x 20 x 3	WASHER 8 x 20 x 3	3
319	K300260802	ECROU H M8 EMB CR ZN NOIR	NUT H M8 NOTCHED SHOULDER BLACK	16
320	K300260602	ECROU H M6 Z EMB CR ZN NOIR	NUT H M6 Z NOTCHED SHOULDER BLACK	2
321	K300211001	ECROU FREIN M10	BLOCKING NUT M10	2
322	K300210801	ECROU FREIN H M8	NUT,NYLOC M8	5
323	K300201001	ECROU HU M10	NUT HU M10	2
324	K300080802	BOULON TRCC 8 x 16	SCREW TRCC 8 x 16	2
325	K300080609	VIS TRCC 6 x 16 ZN NOIR	SCREW TRCC 6 x 16 BLACK	2
326	K300010840	VIS TH 8 x 100 ZN NOIR	SCREW 8x100 BLACK	4
327	K300010839	VIS TH 8 x 95 ZN NOIR	SCREW 8 x 95 BLACK	8
328	K300010817	VIS TH 8 x 25 ZN	SCREW TH 8 X 25 ZN	1
329	0300251204	ECROU BAS HU M12 ZN	NUT HU M12 ZN	1
330	0300091201	VIS STHC A BILLE M12 x 42	SCREW STHC WITH BALL M12	1
331	0300080804	VIS TRCC 8 X 20 Z DIN603	Screw TRCC M8x0 z DIN 603	2
Rep N°	Ref.	Désignation	Description	Qté
400	KL02041610	BRIDE DROITE NOIR	BLACK RIGHT FLANGE	1
401	KL02041609	BRIDE GAUCHE NOIR	BLACK LEFT FLANGE	1
402	KL02040213	CALE BRIDE GOULOTTE ZN	FLANGE WEDGE	1
403	KL02011607	POIGNEE TUBE NOIR	BLACK HANDLE	1
404	KL02011002	TUBE RACCORDEMENT POIGNEE GRIS ALU	ALUMINIUM GRAY HANDLE CONNECTION PIPE	1
405	KL02010402	BRIDE SERRAGE POIGNEE NOIR	BLACK HANDLE CLAMP	1
406	KL02010203	BRIDE DE BAVETTE ZN	FLAP FLANGE	1
407	K342000011	BAVETTE	FLAP	1
408	K341000034	BOUCHON CONIQUE AVEC LANGUETTE	CONIC CAP	1
409	K340000043	GOULOTTE BROYEUR	DISCHARGE SPOUT	1
410	K300400601	RONDELLE PLATE 18 x 6.25 x 1.2 ZN	WASHER 18 X 6.25 X 1.2 ZN	2
411	K300400502	RONDELLE PLATE 5.3 X 12 X 1 ZN	WASHER 5,3 x 12 x 1	4
412	K300210501	ECROU FREIN M5 ZN	BLOCKING NUT M5	6
413	K300080603	BOULON TRCC 6 x 45	SCREW TRCC 6 X 45	2
414	K300010623	VIS HM 6 x 40 ZN	SCREW HM 6 x 40	2
415	K300010621	VIS HM 6 x 35 ZN	SCREW HM 6 x 35	1
416	K300010619	VIS H 6 x 20 EMB CR	SCREW H NOTCHED SHOULD. 6 X 20	2
417	K300010501	VIS HM 5 x 16 ZN	SCREW HM 5 x 16	6
418	0300210602	ECROU FREIN M 6 Z DIN 985-8	BLOCKING NUT M 6 Z	7